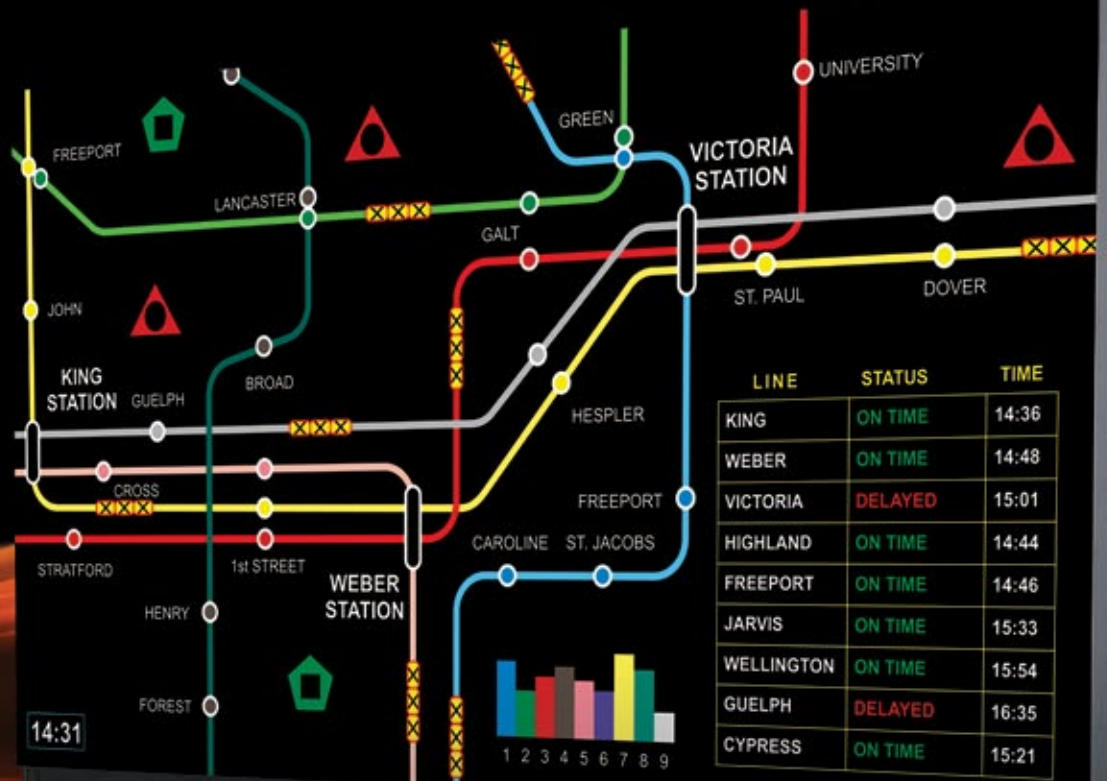


Christie Entero HB Series WUXGA display wall cube



Key features

- High performance
- Latest technologies
- Low power consumption
- Wide viewability
- Best price/performance
- Automation features
- Redundancy features

- Flexible operation
- Zero maintenance design
- Upgradable
- Superior control abilities
- Diagnostic monitoring
- "Plug and Play" setup
- Fast installation

- Modular design
- Multi-mode
- High reliability
- Eco-friendly
- Efficient operation
- Wi-Fi capability

CHRISTIE®

First. Brightest. Wireless control.

Discover the Christie Entero HB Series

Christie® Entero™ HB is the industry leading evolution in performance, reliability and confidence for control room video wall displays. The next generation of high-brightness control room LED displays with up to 1350 lumens capability, it offers the brightest LED projection for cubes available. The Christie Entero HB includes Christie ArraySync™ for superior, intelligent, automatic color and brightness wall management.

Designed for zero maintenance, our safe, sealed heat pipe cooling system ensures long LED lifetime and reliability. The Christie Entero HB series offers minimal set-up time and effort. The modular design with lightweight panels for rear access makes installation and service easy. The optional Thinklogical® direct fiber input card provides fiber-optic video signal extension capability. With the integrated 6-axis geometry alignment system, no electronic image correction is needed providing true native imaging with no scaling or software distortion.

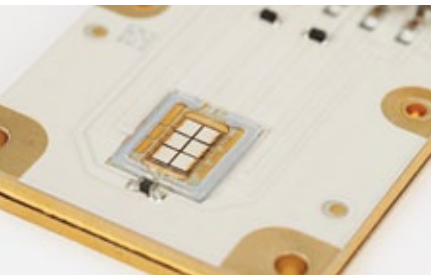
Through the tiling feature, display single source content across an entire array.

Choose the most advanced LED display system design for your control room needs, and along with Christie's quality, service and support, experience an overall low cost of ownership and operation. With the highest brightness on the market, plus unparalleled 24/7 performance, the choice is simple. Choose Christie Entero HB.

Exceed your expectations.

Technical specifications

		Christie Entero HB WUXGA displays		
Models		Cube	Engine	Screen ¹
	72" WUXGA cube system, rear access	• CC72-3601	• RPMWU-LED02	• SC72-XP01 Cross Prism
	WUXGA light engine (stand-alone)	• RPMWU-LED02 • 0.64:1 lens • Non Wi-Fi models also available		
Imaging technologies	imaging	• Superior 0.96" 1-chip DLP®, Dark Chip • Texas Instruments		
	native resolution	• WUXGA (1920 x 1200) • 16:10 aspect ratio		
	illumination	• LED (Red, Green, Blue) • OSRAM • Redundant LED Architecture		
Cross prism screen	technology	• Optical: Fresnel/cross prism • DNP		
	screen gap (image to image) ²	• 0.2-1.0mm • Adjustable • 1mm nominal recommended for rear access @25°C		
	viewability	• 180° Horizontal • 120° Vertical • ±35° Horizontal ½ gain • ±27° Vertical ½ gain		
Brightness		High brightness mode	Normal mode	Eco mode
	light engine (ANSI)	• Up to 1350 lumens	• 950 lumens	• 740 lumens
	control	• Manual and continuous automatic (ArraySync) control to manage brightness uniformity across large display walls		
Color	temperature range	• 3200-9300°K		
	gamut	• Wider than EBU		
	white color balance	• 0.0035 Δu' Δv'		
	control	• ArraySync automatic color management with 12-bit processing to precisely and continuously manage uniformity across large display walls without user intervention • Precise tri-stimulus color sensing (x,y,z) for superior color management • Display light engine is factory calibrated using scientific-grade spectral radiometers for high precision color management • Comprehensive fine adjust controls for manual setup if desired		
Optical	brightness uniformity	• >95% at typical brightness levels specified		
	contrast ratio	• Up to 2100:1 full field without using dynamic or artificial techniques		
Audible noise	noise power level	• <30 dBA typical at 1 meter distance from screen center		
Inputs	standard	• 1 x digital DVI-D • 165 MHz maximum pixel clock frequency • Single link		
	DVI loop-through capability	• Up to 25 displays on a single loop-through chain		
	HDCP support	• Included (operating at native resolution)		
	optional expansion	• Secondary DVI-D input with automatic fail detection and switch over • Thinklogical direct fiber input card		
	compatibility	• All Christie video wall processors and most standard sources		
Control and networking	methods	• IR full function remote keypad • External computer or control device via Ethernet and/or RS-232 and/or Wi-Fi (Wi-Fi can be disabled with no radio frequency transmission if required)		
	physical ports	• 1 x RS-232 • 2 x Ethernet RJ4		
	Ethernet bridging (daisy chain) limit	• Up to 25 Ethernet bridges, projector to projector without external switch		
Monitoring	status display	• 2 line by 16 character OLED display		
	diagnostics	• Via status display, RS-232 and Ethernet/Wi-Fi (Wi-Fi can be disabled with no radio frequency transmission if required)		



◀ Redundant LED design offers fail-safe operation.



◀ The Christie Entero HB Series features multiple light-weight snap-in service panels for easy access and an improved mirror alignment system for precise geometry control.

▶ Stand-alone LED light engine available for custom or direct throw installations.



Christie Entero HB WUXGA displays					
Upgradability	software/firmware	• Fast, on site firmware upgrades via Ethernet or RS-232			
Options	accessories	• Full function IR remote keypad • Secondary DVI-D input module • Thinklogical direct fiber input card • Cube pedestals • Alternate screen types			
Physical characteristics	screen size	• 61.06 x 38.16" (1551 x 969mm)			
	cube depth (total)	• 33.33" (846mm)			
	weight – cube	• 159lbs (72kg)			
	weight – screen	• 80lbs (36kg)			
	weight – engine	• 55lbs (25kg)			
	cube stacking limit ³	• 5 cubes high			
	service access	• Rear lightweight panels for CC models			
Environment	operating temperature	Cube	Engine	Screen	
		• 40-90°F (5-35°C)	• 32-104°F (0-40°C)	• 63-88°F (17-31°C)	
	non-operating temperature	• -4-122°F (-20-50°C)		• -13-158°F (-25-70°C)	
	humidity	• 20-80% NC, 35-65% NC for storage		• 40-60% NC	
altitude	• 0-3000m (0-10,000 feet)				
Power rating (projection engine)	power consumption	Eco mode	Normal mode	High brightness mode	
		• 155W	• 210W	• 250W	
		dissipation	• 529 BTU/hr		• 717 BTU/hr
		• 529 BTU/hr	• 717 BTU/hr		• 853 BTU/hr
Reliability and serviceability	MTBF	• >60,000 hrs for all major modules • 76,000 hrs for power supply			
	MTTR	• <15 minutes via modular servicing			
	cooling fan lifetime	• >100,000 hrs			
	LED lifetime	• >80,000 hrs in eco mode • >60,000 hrs in normal operating mode			
Regulatory (projection engine)	• (EC) 2011/65/EU (RoHS) • 2012/19/EU (WEEE) • Regulation (EC) No. 1907/2006 (REACH) • CAN/CSA C22.2 No. 60950-1 • UL 60950-1 • IEC 60950-1 • FCC, Part 15, Subpart B, Class A • ICES/NMB003 (A) • EN55022/CISPR22 Class A • EN55024/CISPR24 • The product is designed to comply with rules and regulations required for the product to be sold in various regional markets, including: USA/Canada, EU, Australia/ New Zealand, Kuwait, China, Korea, Japan, Mexico, Ukraine, Russia, India, South Africa, and Saudi Arabia				
Warranty	• Two years parts and labor limited warranty • Extended warranty available				
Additional features and benefits	• Integrated 6-axis adjustment system – no electronic image correction required • Tiling feature to display a single source across a wall array (to 25 displays) • DVI loop-through minimizes cabling • Multiple Ethernet ports minimize cabling • Safe, water-filled, maintenance free, metal sealed heat pipe cooling system ensures long LED lifetime and reliability • No liquid cooling pumps containing hazardous liquids and requiring annual maintenance/inspection nor hazardous waste disposal • Cable channeling system enables clean, professional and concealed cabling of all input, power and interconnect cables within the cubes				

¹ Other screen types also available. ² Depending on environment and wall configuration. ³ Depending on pedestal type used.

Corporate offices

Christie Digital Systems USA, Inc
USA – Cypress
ph: 714 236 8610

Christie Digital Systems Canada Inc.
Canada – Kitchener
ph: 519 744 8005

Independent sales consultant offices

Italy
ph: +39 (0) 2 9902 1161

Worldwide offices

Australia
ph: +61 (0) 7 3624 4888

Brazil
ph: +55 (11) 2548 4753

China (Beijing)
ph: +86 10 6561 0240

China (Shanghai)
ph: +86 21 6278 7708

Eastern Europe and
Russian Federation
ph: +36 (0) 1 47 48 100

France
ph: +33 (0) 1 41 21 44 04

Germany
ph: +49 2161 664540

India
ph: +91 (080) 6708 9999

Japan (Tokyo)
ph: 81 3 3599 7481

Korea (Seoul)
ph: +82 2 702 1601

Republic of South Africa
ph: +27 (0)11 510 0094

Singapore
ph: +65 6877 8737

Spain
ph: +34 91 633 9990

United Arab Emirates
ph: +971 4 3206688

United Kingdom
ph: +44 (0) 118 977 8000



ISO 9001
ISO 14001

Kitchener, Ontario



For the most current specification information, please visit www.christiedigital.com



Copyright 2014 Christie Digital Systems USA, Inc. All rights reserved. All brand names and product names are trademarks, registered trademarks or tradenames of their respective holders. Christie Digital Systems Canada Inc.'s management system is registered to ISO 9001 and ISO 14001.

Performance specifications are typical unless otherwise noted. Performance specifications are based on information available at the time of printing. Every effort has been made to ensure accuracy, however in some cases changes, product or feature delays could occur which may not be reflected in this brochure. Christie Digital Systems USA, Inc. reserves the right to make changes without notice or obligation.

Printed in Canada on recycled paper. 3737 Jan 14

CHRISTIE®